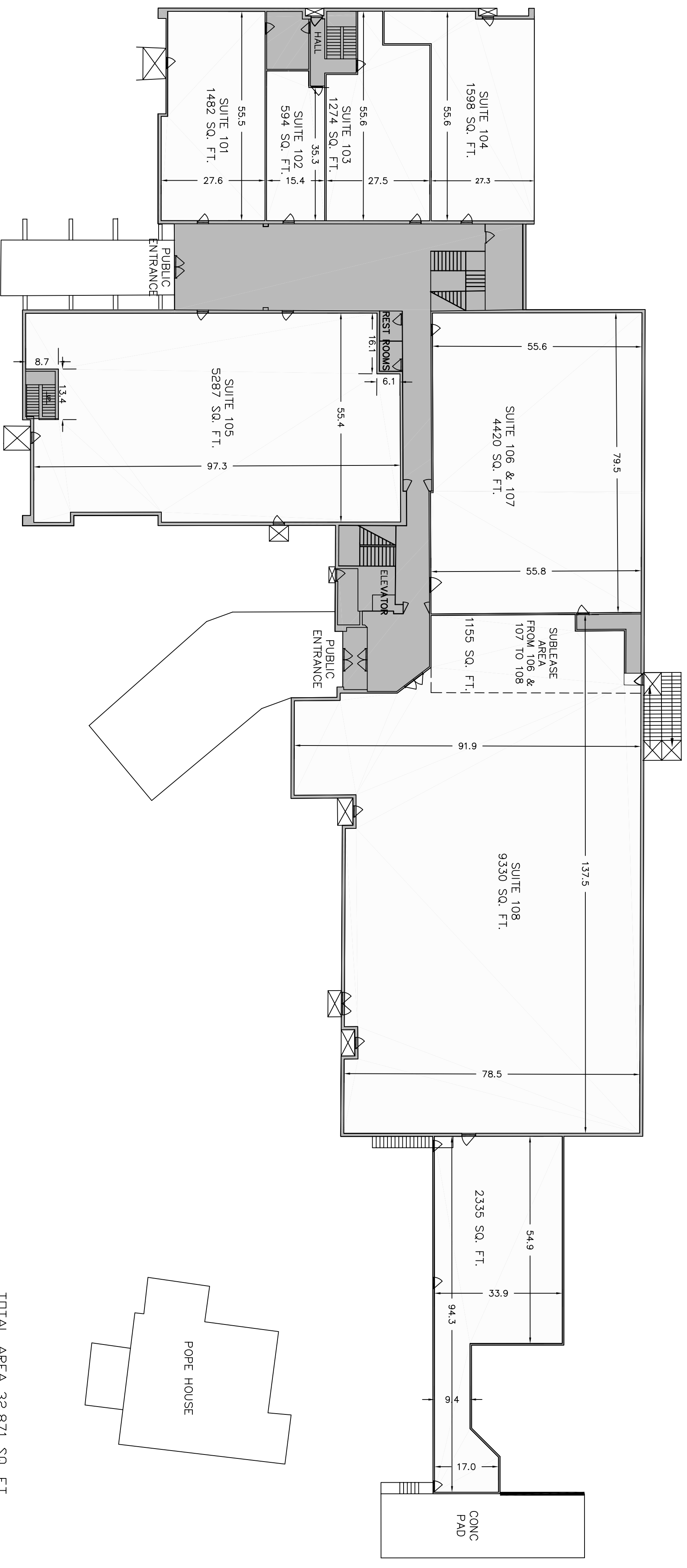


LOWER LEVEL



TOTAL AREA 32,871 SQ. FT.
 TOTAL CONDDO AREA 27,475 SQ. FT.
 TOTAL COMMON AREA 5,396 SQ. FT.

LEGEND

- PRIVATE ENTRANCE (UNMARKED)
- COMMON AREA
- CONCRETE STOOP
- SINGLE DOORS
- DOUBLE DOORS

BRISTOL PROFESSIONAL PARK



PROPERTY OF PROFESSIONAL PARK ASSOCIATION

DRAWN BY:	JCM	DATE:	06/19/09	350 HIGHWAY 126 CIVIL DISTRICT 17 BRISTOL, TENNESSEE
APPROVED BY:	TFH	DATE:	06/19/09	
SCALE:	1 INCH = 20 FT.	SHEET:	1 OF 2	PROJECT:

REV. 06/22/09 PER COMMENTS

